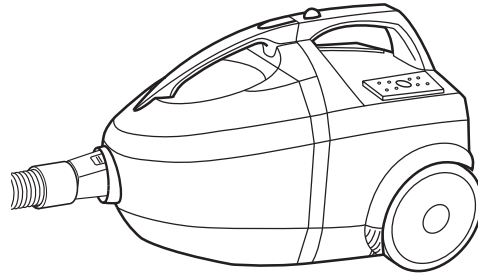


morphy richards®



Storm vacuum cleaner



Please read and keep these instructions

Getting the best from your new cleaner...

If your cleaner is not picking up as well as it should, please check

Filters

To maintain maximum performance, the pleated filter must be cleaned whenever the canister is emptied. The filter may also be washed but must be fully dry before re-fitting. See page 5 for more details.

Blockages

Check nozzles, tubes and hose for blockages.

Safety cut-out

If the cleaner overheats, a motor protection thermostat will automatically switch the cleaner off. If this happens, switch the cleaner off, unplug from the power supply and leave the cleaner to cool for at least 60 minutes. Check the airways for blockages, empty the dust canister and clean the filters before restarting.

VC73215 MUK Rev 3



If you have a problem or complaint, please call our dedicated UK based helpline before returning your product to the retailer from where it was purchased.



UK Helpline: 0844 871 0949
Replacement Parts: 0844 873 0715
Ireland Helpline: 1800 409 119



For details of other Morphy Richards products, plus replacement parts and accessories, please see our website:

www.morphyrichards.com

IMPORTANT SAFETY INSTRUCTIONS

The use of any electrical appliance requires the following common sense safety rules.

Primarily there is danger of injury or death and secondly the danger of damage to the appliance.

Please read these instructions before using the cleaner.


Location

- Do not use or keep this product outside.
- Do not store the appliance near hot surfaces, eg. ovens or heating appliances.

Mains lead

- Do not allow the mains lead to become strained or run this appliance over it.
- If the electrical cable becomes damaged, the cable assembly must be replaced. Do not attempt this task yourself, contact the helpline number that is found at the bottom of the page.

Personal safety

- **WARNING: Keep loose clothing, hair, fingers etc. away from the nozzle whenever the cleaner is connected to the mains.**
- **WARNING: Disconnect from the mains supply before carrying out any routine maintenance, such as clearing any blockages, changing any filters or accessing the floor nozzle.**
- **WARNING: Only lift the product by the carry handle** 

- The plug must be removed from the wall socket before cleaning or maintaining the appliance.
- Never use in the presence of explosive liquid or vapours.
- Never pick up inflammable or poisonous liquids such as petrol, copier toner or other volatile substances. Never pick up acids, asbestos or asbestos dust.
- Never touch the plug or cable with wet hands.
- Unprofessional repairs can be dangerous for users.
- The appliance must never be left running unsupervised.
- This appliance is intended for domestic use only. Misuse or use for commercial or any other purpose will render the guarantee invalid.

- Always disconnect the appliance from the mains supply after use or prior to emptying or cleaning.
- To protect against fire, electric shock and personal injury, do not immerse cord, plug or cleaner in water or other liquid.
- This appliance is not intended for use by persons (including children) with reduced physical, sensory or mental capabilities, or lack of experience and knowledge, unless they have been given supervision or instruction concerning the use of the appliance by a person responsible for their safety.

Product safety

- Never use the appliance without the filters installed.
- Never use the appliance to vacuum hot ashes, broken glass, sharp objects or liquids.
- Use only Morphy Richards spare parts and accessories.

- Repairs to electrical appliances are only to be undertaken by trained personnel. Unprofessional repairs can be dangerous for users.
- Never modify the cleaner in any way.

Children

- Children do not understand the dangers associated with operating electrical appliances. Never allow children to use this appliance.
- Children should be supervised to ensure that they do not play with the appliance, or stumble over the power cord.

ELECTRICAL REQUIREMENTS

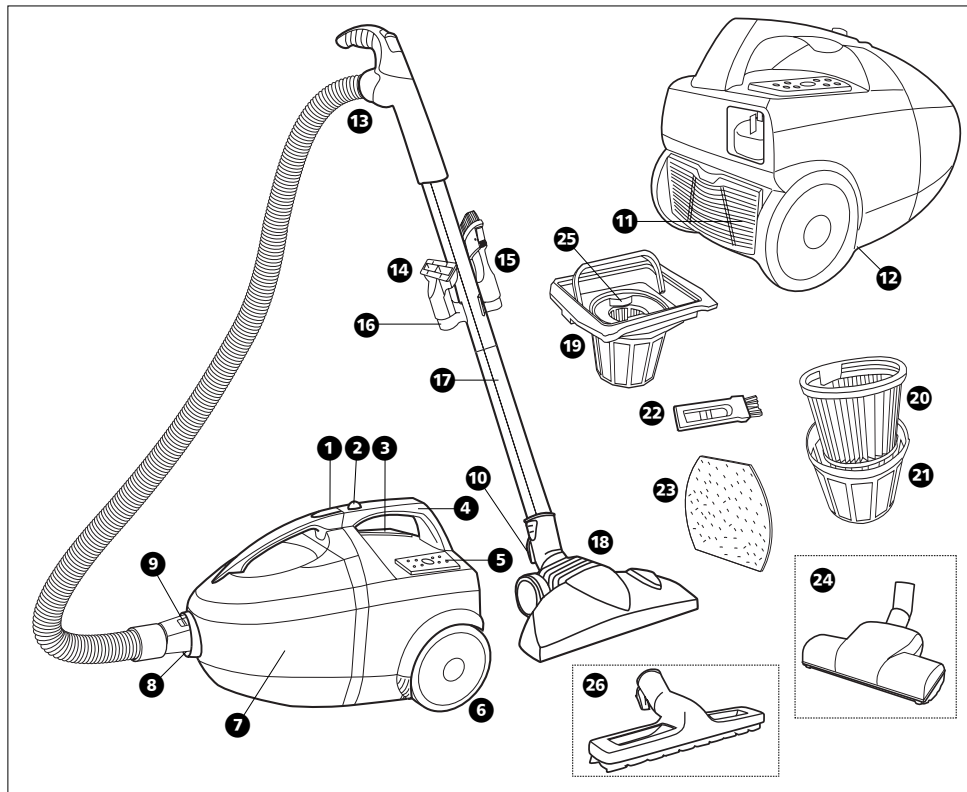
Check that the voltage on the rating plate of your appliance corresponds with your house electricity supply which must be A.C. (Alternating Current).

If the socket outlets in your home are not suitable for the plug supplied with this appliance, the plug should be removed and the appropriate one fitted.

If you cut off the plug and let go of the cable, it will rewind into the machine, therefore, you must pull out a length of cable and secure it before cutting the plug off and re-fitting a new one.

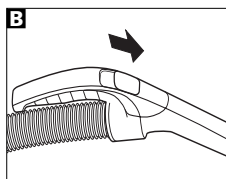
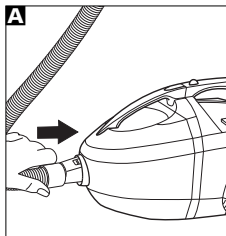
WARNING: The plug removed from the mains lead, if severed, must be destroyed, as a plug with a bared flexible cord is hazardous if engaged into a live socket outlet.

Should the fuse in the 13 amp plug require changing, a 13 amp BS1362 fuse must be fitted.



FEATURES

- | | | |
|---------------------------------|-------------------------------------------|--------------------------------------------|
| 1 Dust canister release latch | 10 Storage hook | 19 Filter assembly |
| 2 Eco switch | 11 Exhaust filter and cover | 20 Pleated filter |
| 3 Cable rewind button | 12 Tube storage slot (underneath product) | 21 Mesh filter |
| 4 Handle | 13 Hose/handle with airflow control | 22 Small cleaning brush |
| 5 Power ON/OFF switch | 14 Upholstery nozzle | 23 Motor protection filter (see page 6) |
| 6 Wheels | 15 Crevice tool with brush attachment | 24 Turbo nozzle (certain models only) |
| 7 Dust canister | 16 Tool storage clip | 25 Click-to-clean feature |
| 8 Hose inlet | 17 Extension tubes | 26 Hard floor nozzle (certain models only) |
| 9 Hose connector release button | 18 Floor nozzle | |



OPERATING THE APPLIANCE

ASSEMBLY

IMPORTANT: Switch off before fitting or removing accessories.

Fitting the flexible hose

Insert the flexible hose connector in the hose inlet duct ③ at the front of the product. Press until it clicks into position **A**.

Removing the flexible hose

Press the hose connector release button ④ to release the flexible hose. Pull the hose firmly from the hose inlet duct.

Fitting the extension tube and accessories

Attach the extension tube ⑦ to the handle end ③ of the hose.

Attach the floor nozzle ⑩ to the tube and set the floor nozzle lever to the appropriate position.

Telescopic tube (certain models only)

Extend to the required length by pressing down the slider release and pulling out the tube.

Other accessories include:

- **Upholstery nozzle ⑭** for sofas, armchairs etc.
- **Crevice tool ⑮** for awkward places, corners and behind radiators etc.
- **Brush attachment ⑯** for pelmets, delicate objects etc.
- Tools can be stored on the tool storage clip ⑰ that slides onto the extension tube or telescopic tube.

CONTROLS

ON/OFF control

Press the ON/OFF switch ⑤ to start the machine, press again to turn off.

Eco Switch

The Eco Switch ② allows you to turn down the power when cleaning more delicate items, such as curtains and upholstery, saving energy and reducing running costs.

Suction control on the handle

The suction power can be adjusted using the fingertip control on the handle ⑬ **B**.

Closed: full suction

Open: low suction

2-position wheeled floor nozzle ⑩

The brushes should be retracted for use on carpets, and extended for use on hard floors, by adjusting the lever on top of the floor nozzle.

Turbo nozzle (certain models only) ⑲

This nozzle is suitable for cleaning and rejuvenating cut pile carpets and is ideal for picking up stubborn dirt and pet hairs.

Cleaning the turbo nozzle (certain models only)

The turbo nozzle should be regularly cleaned and any hairs or fibres wrapped around the brush bar removed to maintain optimum performance.

Hardfloor nozzle

(certain models only)

Attach the hardfloor nozzle 26 to either the 2 separate attachable tubes, or the single telescopic tube (dependant on model).

This nozzle is ideal for use on wood, laminate, tile and vinyl flooring.

USE

- 1 Assemble the cleaner as required.
- 2 While holding the cleaner, use the plug to pull out the full length of cable. A red mark indicates the maximum length. Do not try to pull the cable past this mark.
- 3 Connect the plug to the mains supply.
- 4 Press the ON/OFF button 5.
- 5 Check the suction control and floor nozzle controls are set as required.
- 6 Start vacuuming.

Do not use the cleaner in an upright position.

AFTER USE

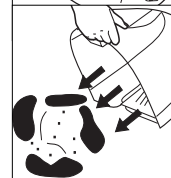
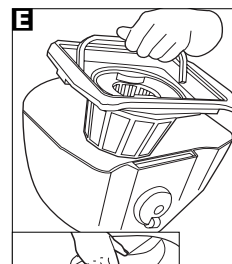
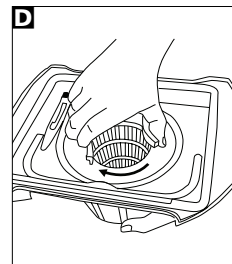
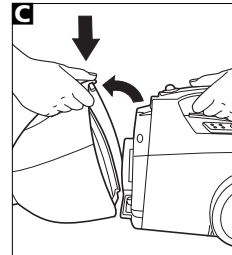
- 1 Switch off the vacuum cleaner.
- 2 Unplug from the mains.
- 3 Rewind the cable by pressing the rewind button 3.

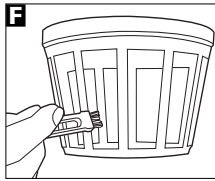
WARNING: When using the cable rewind, always hold the plug, as the cable will rewind quickly.

EMPTYING THE DUST CANISTER

WARNING: Never operate the cleaner without the dust canister filter assembly 19 or motor protection filter 23 fitted.

- 1 Disconnect the cleaner from the mains socket.
- 2 Disconnect the hose from the cleaner.
- 3 Remove the dust canister 7 from the cleaner by pushing the release latch 1 C.
- 4 Take the dust canister to the bin.
- 5 **By using the click-to-clean feature 25, rotate the pleated filter inside the mesh filter to shake loose the dust D.**
- 6 Raise the filter assembly 19 handle then lift out the filter assembly from the dust canister 7 E.
- 7 Empty the dust canister into the bin.
- 8 Place the dust canister safely to one side.
- 9 Clean the filters as described overleaf.
- 10 Reassemble.

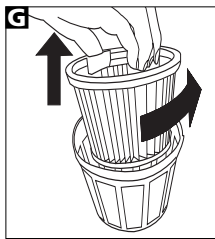




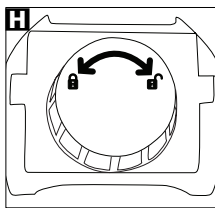
FILTERS

Cleaning the pleated filter

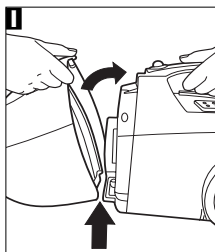
You should clean the pleated filter each time the product is emptied.



- 1 Use the small brush 22 provided (located on the filter assembly) to remove any fluff from the outside of the mesh filter 21.
- 2 Rotate the mesh filter 21 clockwise to release the mesh filter and pleated filter 20 assembly from the filter holder 23.
- 3 Lift out the pleated filter 20 then empty out the dust from the mesh filter 21 into the bin.

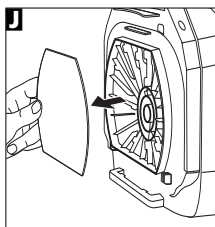


- 4 Re-assemble the filter assembly by placing the pleated filter inside the mesh filter, then place the filter holder on top in the correct position. Rotate the mesh filter assembly anti-clockwise to lock the assembly together 23.



- 5 Place the filter assembly back inside the dust canister, making sure the filter assembly is placed level and that the filter holder seal is seated neatly.

- 6 Re-attach the dust canister to the cleaner by hooking the bottom of the dust canister in first, then closing the canister until it clicks and the canister release catch 1 is fully down and secured 11.



If there is resistance when you re-fit the canister onto the cleaner, remove and carefully reseat the filter assembly back into the canister, ensuring the filter assembly seal is located fully and neatly.

Washing the pleated filter

For total cleaning of the pleated filter, it should be washed with warm water with no detergents. Allow the filter to air dry.

IMPORTANT: The filter must be completely dry before re-fitting.

Motor protection filter

This cleaner is fitted with a motor protection filter.

IMPORTANT: NEVER USE THE VACUUM CLEANER WITHOUT THIS IN PLACE.

Cleaning the motor protection filter

- 1 Remove the filter 25 from the filter grille 11.
- 2 Rinse the filter in luke warm water and **dry the filter completely.**
- 3 Put the filter back into the filter grille and reassemble.

Exhaust filter

Remove the exhaust filter grille ① by pulling the locking tab towards you ④. Take the filter out of the cage and shake vigorously over a dustbin. The filter may also be washed in warm water. Do not use detergents. The filter must be completely dry before re-fitting. Allow filters to air dry naturally. Replace the filter and filter grille.

IMPORTANT

- Always disconnect the cleaner from the mains when checking filters.
- All filters should be checked regularly for signs of damage, preferably after each cleaning task. The filters must be replaced immediately if they become damaged.
- Always make sure all filters are fitted before use, failure to do so may result in damage to your product.
- If the sound of the cleaner changes slightly, clean the filters and check for blockages.

HINTS AND TIPS

Storage position

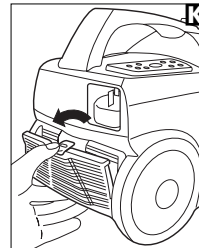
The vacuum cleaner can be stored in an upright position. Slide the storage hook ⑩ on the floor nozzle into the slot on the base of the product ⑫ and the tubes, hose and floor nozzle are held securely ⑬.

Safety cut-out

If the cleaner overheats, a motor protection thermostat will automatically switch the cleaner off. If this happens, **switch the cleaner off, unplug from the power supply and leave the cleaner to cool for at least 60 minutes.** Check the airways for blockages, empty the dust canister and clean the filters before restarting.

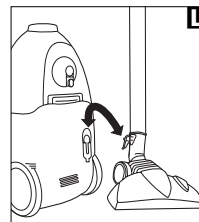
Care and maintenance

Your cleaner is manufactured to withstand normal day-to-day use, but an occasional wipe over with a damp cloth will help maintain its good looks. Abrasive cleaners should not be used.



Purchasing filters

Use original filters. Replacement filters can be purchased from specialist retailers or directly from our Replacement Parts telephone number shown below.



HELPLINE

If you have any difficulty with your appliance, do not hesitate to call us.

We are more likely to be able to help than the store from where you bought it.

Please have the following information ready to enable our staff to deal with your query quickly.

- Name of the product
- Model number as shown on the underside of the appliance.
- Serial number as shown on underside of the appliance.

UK Helpline 0844 871 0949

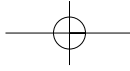
Replacement Parts 0844 873 0715

Ireland Helpline 1800 409 119

WEBSITE

You may also contact us through our website, or visit the site to browse and purchase appliances, spare parts and accessories from the extensive Morphy Richards range.

www.morphyrichards.com



YOUR TWO YEAR GUARANTEE

It is important to retain the retailer's receipt as proof of purchase. Staple your receipt to this back cover for future reference.

Please quote the following information if the product develops a fault. These numbers can be found on the base of the product.

Model no.

Serial no.

All Morphy Richards products are individually tested before leaving the factory. In the unlikely event of any appliance proving to be faulty within 28 days of purchase, it should be returned to the place of purchase for it to be replaced.

If the fault develops after 28 days and within 24 months of original purchase, you should contact the Helpline number quoting Model number and Serial number on the product, or write to Morphy Richards at the address shown.

You may be asked to return a copy of proof of purchase.

Subject to the exclusions set out below (see Exclusions), the faulty appliance will then be repaired or replaced and dispatched usually within 7 working days of receipt.

If you suspect a fault, follow the simple checks detailed below before retrying the appliance or calling the helpline.

Morphy Richards products are intended for household use only.

Morphy Richards has a policy of continuous improvement in product quality and design. The company, therefore reserves the right to change the specification of its models at any time.

- Check the filters for blockages.
- Check the tools / tubes for blockages.
- Check the plug is firmly in the socket.
- Check the socket is working by trying another appliance.
- Check the fuse in the plug.

If, for any reason, this item is replaced during the 2 year guarantee period, the guarantee on the new item will be calculated from the original purchase date. Therefore, it is vital to retain your original till receipt or invoice to indicate the date of initial purchase.

To qualify for the 2 year guarantee, the appliance must have been used according to the instructions supplied.

EXCLUSIONS

Morphy Richards shall not be liable to replace or repair the goods under the terms of the guarantee where:

- 1 The fault has been caused or is attributable to accidental use, misuse, negligent use or used contrary to the manufacturer's recommendations or where the fault has been caused by power surges or damage caused in transit.
- 2 The appliance has been used on a voltage supply other than that stamped on the products.
- 3 Repairs have been attempted by persons other than our service staff (or authorised dealer).

- 4 The appliance has been used for hire purposes or non-domestic use.
 - 5 The appliance is second hand.
 - 6 Morphy Richards are not liable to carry out any type of servicing work, under the guarantee.
 - 7 The guarantee excludes consumables such as some filters.
- This guarantee does not confer any rights other than those expressly set out above and does not cover any claims for consequential loss or damage. This guarantee is offered as an additional benefit and does not affect your statutory rights as a consumer.
 - This guarantee is valid in the UK and Ireland only.



For electrical products sold within the European Community. At the end of the electrical products useful life, it should not be disposed of with household waste. Please recycle where facilities exist. Check with your Local Authority or retailer for recycling advice in your country.

morphy richards®

**The After Sales Division
Morphy Richards Ltd**
Mexborough, South Yorkshire,
England, S64 8AJ

Helplines (office hours)
UK 0844 871 0949
Spare Parts 0844 873 0715
Republic of Ireland 1800 409 119

VC73215 MUK Rev 3 09/08

For details of other Morphy Richards products, plus replacement parts and accessories, please see our website:

www.morphyrichards.com

